



# LIVING WITH COVID-19

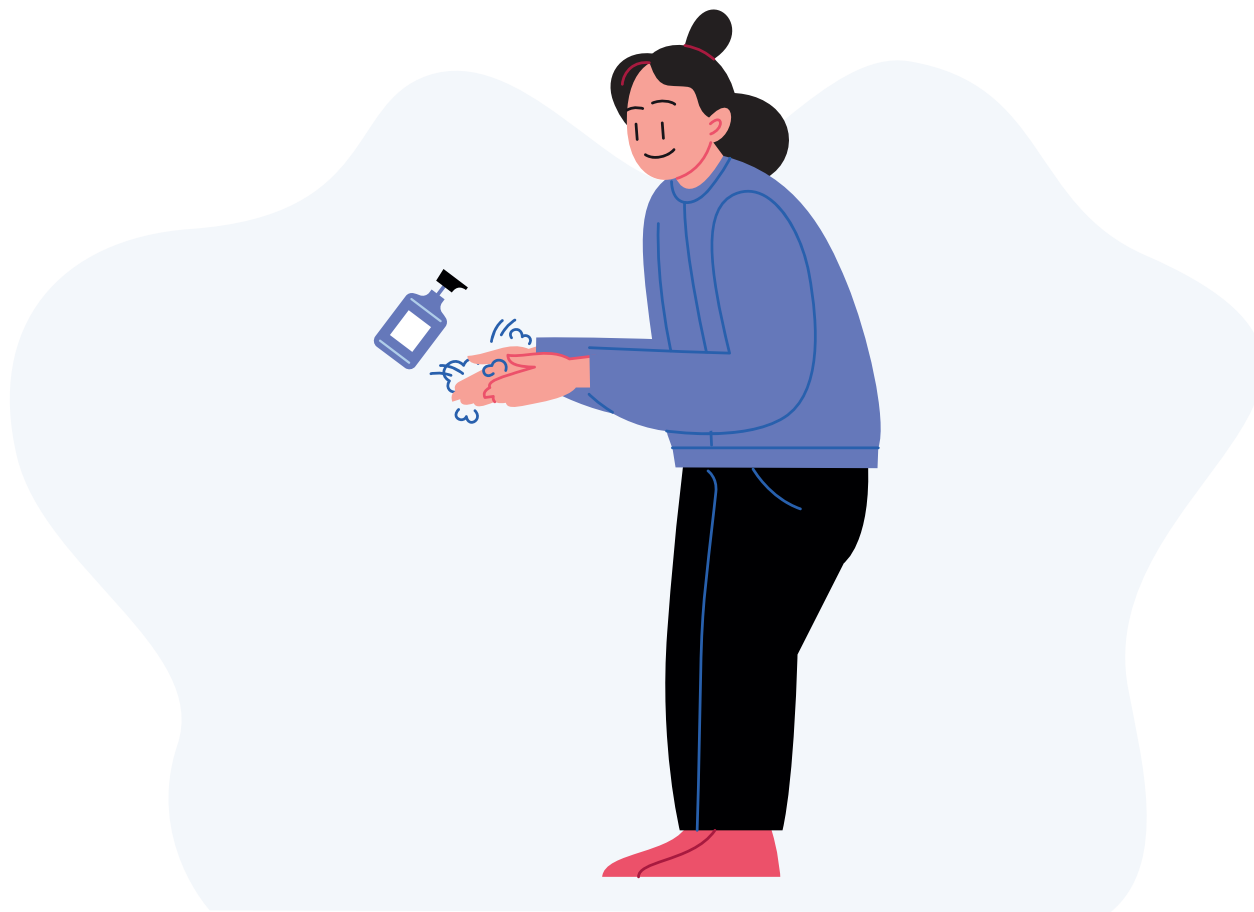
## USING AN ATM





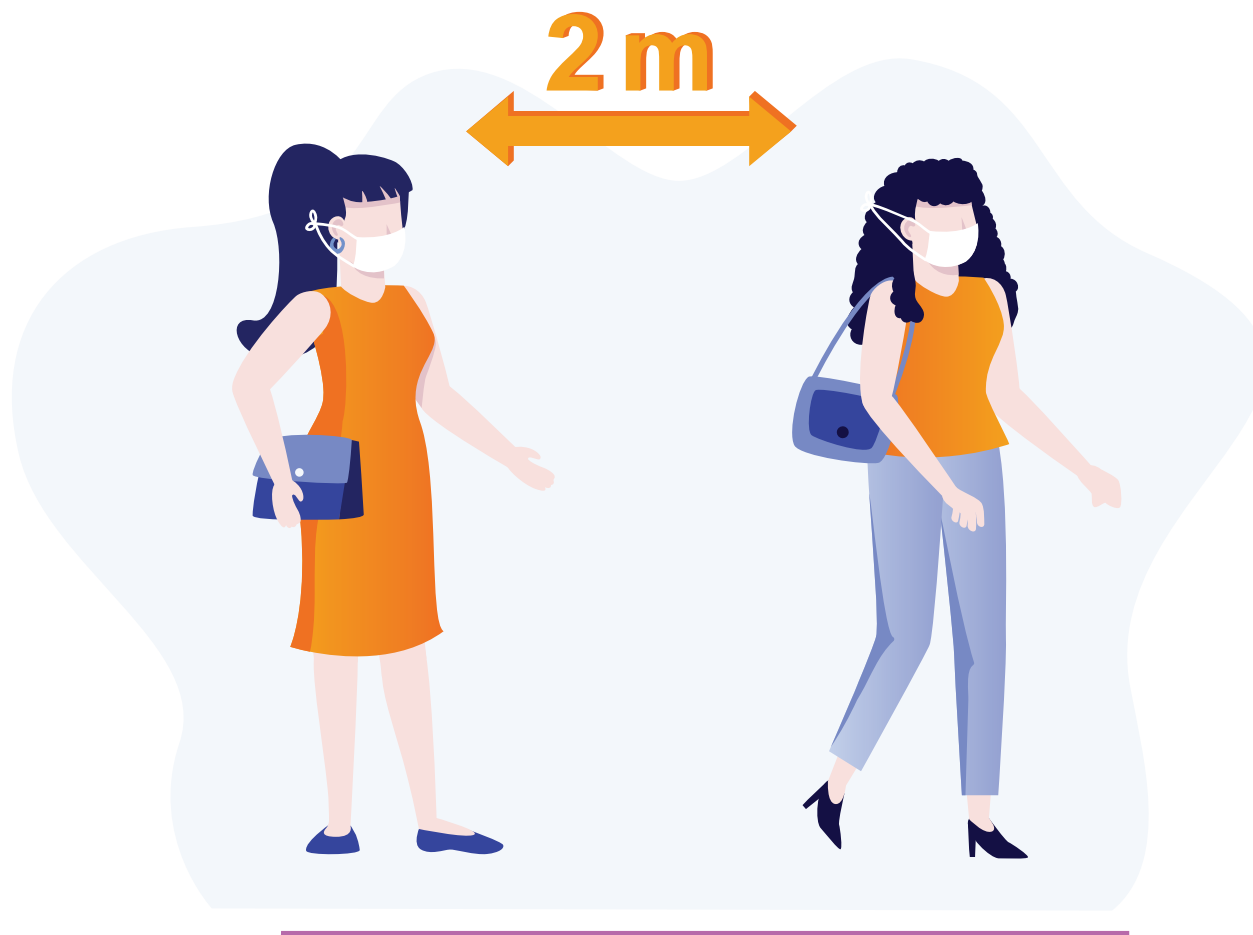
---

**Always wear a mask** and gloves (preferably),  
before entering an ATM outlet.

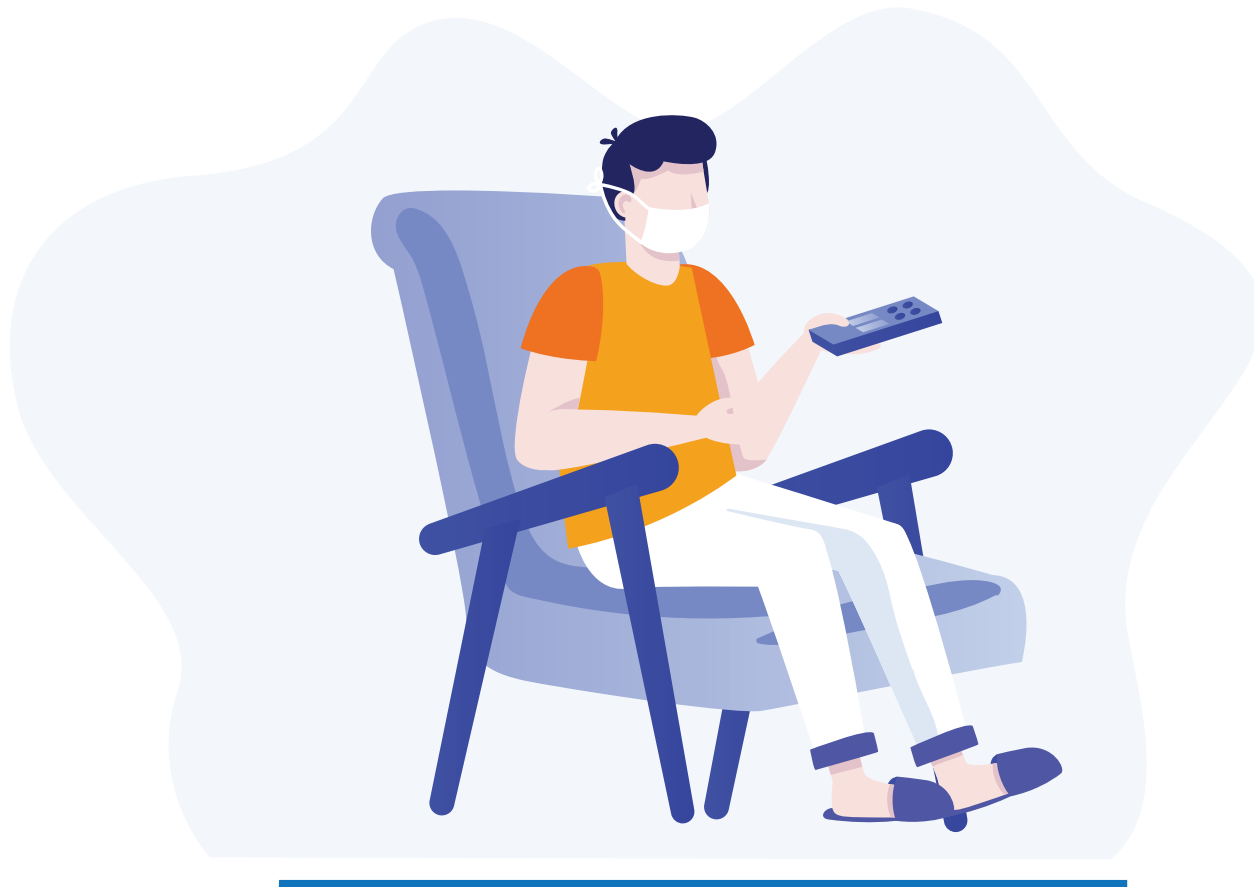


---

Discard gloves after conducting a transaction.  
If not wearing gloves, **sanitise your hands** after  
doing a transaction.



**Only one person** to be inside the ATM outlet.  
Maintain atleast six feet distance between people  
standing in the queue outside.



**Avoid frequent visits,** opt for online and app based transactions.



Otherwise, opt for **card-less cash withdrawal** facility offered by certain banks.



ISSUED IN PUBLIC INTEREST BY



Content by:  
Dr Vaibhav Mishra  
Director – CTVS

**#TheNewNormal #LivingWithCOVID**

For more information, write to [reachus@fortishealthcare.com](mailto:reachus@fortishealthcare.com)

To book an e-consult, visit [www.fortishealthcare.com](http://www.fortishealthcare.com)

**While  
visiting us,  
please**



Wear a  
mask at  
all times



Maintain  
Social  
Distancing



Carry  
hand  
sanitizer